



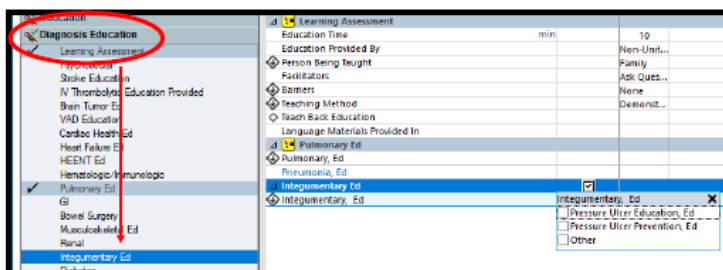
## Clinical Updates

### Mission Hospital Only: MRI Patient Transport Process when patient has continuous telemetry or SPO2 monitoring orders

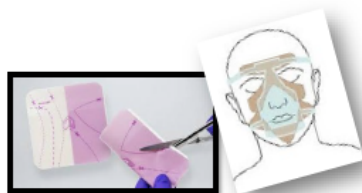
- Patients who have continuous telemetry or SPO2 monitoring orders must be accompanied by a RN/LPN with a telemetry monitoring competency to MRI.
- **Nursing workflow:** Place patient on tele box → Notify CMU of patient transport to MRI → Accompany patient → Notify CMU when monitoring stops → Place patient on MRI-compatible leads → Monitor patient for the duration of the MRI → Notify CMU when patient is placed back on tele box → Notify CMU when patient returns to the unit
- Notify the Charge Nurse/CNC as soon as possible when a MRI is ordered.

## PIP Tip: Sharing is Caring: Educate

Help patients and families understand HOW and WHY we prevent pressure injuries



- ✓ Bordered foams even out pressure & reduce friction
- ✓ Medical devices are HARD! Padding provides comfort & protects the skin



<https://www.shieldhealthcare.com/community/popular/2015/11/18/move-every-two-repositioning-patients-to-prevent-pressure-ulcers/>

### Why we reposition

